

FIND YOUR DREAM HOME BY THE SEA

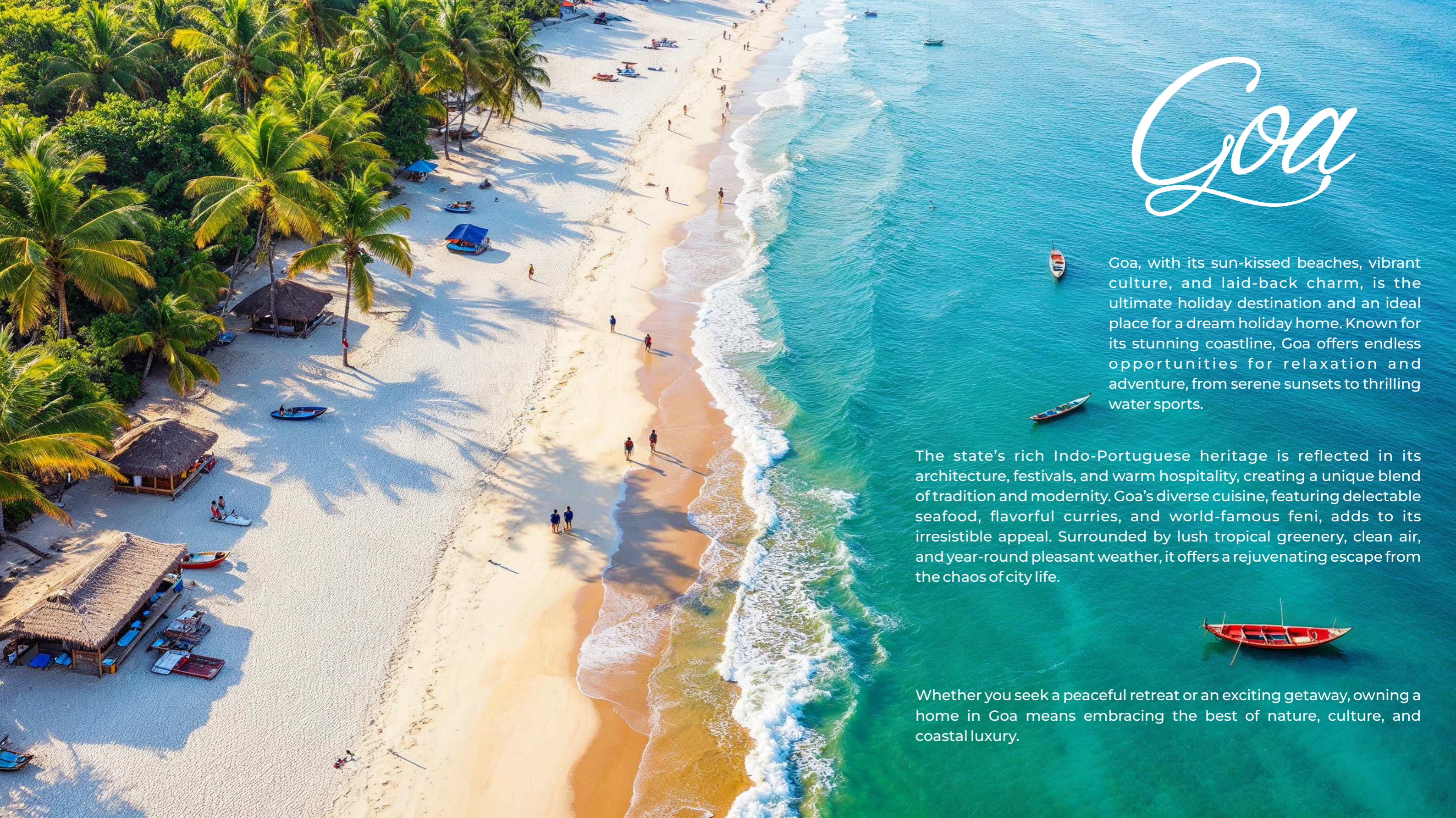
SOSSEGO

LUXURY VILLAS AT MAJORDA - GOA



POROBO

Porobo Realty LLP



Goa

Goa, with its sun-kissed beaches, vibrant culture, and laid-back charm, is the ultimate holiday destination and an ideal place for a dream holiday home. Known for its stunning coastline, Goa offers endless opportunities for relaxation and adventure, from serene sunsets to thrilling water sports.

The state's rich Indo-Portuguese heritage is reflected in its architecture, festivals, and warm hospitality, creating a unique blend of tradition and modernity. Goa's diverse cuisine, featuring delectable seafood, flavorful curries, and world-famous feni, adds to its irresistible appeal. Surrounded by lush tropical greenery, clean air, and year-round pleasant weather, it offers a rejuvenating escape from the chaos of city life.

Whether you seek a peaceful retreat or an exciting getaway, owning a home in Goa means embracing the best of nature, culture, and coastal luxury.



SOSSEGO
MAJORDA - GOA



SOSSEGO

MAJORDA - GOA

Welcome to SOSSEGO by Porobo Realty, an exclusive collection of luxury villas in the serene coastal paradise of Majorda, Goa.

Inspired by the Goan philosophy of sussegado—a relaxed and laid-back lifestyle—SOSSEGO is designed for those who seek the perfect blend of luxury and tranquility.

Just minutes from the pristine Majorda Beach, these villas offer an unmatched living experience surrounded by lush greenery, beautifully landscaped gardens, and the calming embrace of nature. Each home is thoughtfully crafted with spacious interiors, private pools, and seamless indoor-outdoor living, ensuring a peaceful retreat from the hustle of everyday life.

With complete privacy, modern comforts, and an ambiance of serenity, SOSSEGO redefines luxury living in Goa's most sought-after location.

Discover a haven where time slows down, and every moment is an invitation to unwind.



POROBO



Entry Gate



Villa 3

Villa 2

Villa 1

Internal Driveway

Villa 4

Villa 5

Villa 6

Villa 7

SCHEME LAYOUT

PROJECT AMENITIES

- Gated & Compounded Community
- 24 hrs Security
- CCTV Surveillance at entry & exit points
- Private pool
- Jacuzzi in Master Bathroom
- Pool side deck with loungers
- Landscaped gardens
- Generator backup for entire villa
- Modular kitchen with hob & chimney
- Video Door Phone
- Reserved parking for 2 cars per villa
- WIFI provision
- Private internal Lifts for each villa



POROBO



SOSSEGO
MAJORDA GOA







SOSSEGO
MAJORDA - GOA





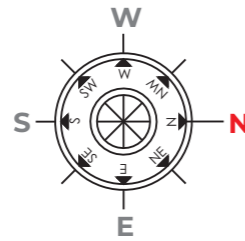
SOSSEGO
MAJORDA - GOA

VILLA TYPE 1



VILLA TYPE 1

VILLAS 1,2 & 3



AREA - 279.98 SQ. MTS.+ 35.75 SQ. MTS.(O.T.)

SOSSEGO
MAJORDA - GOA



GROUND FLOOR PLAN

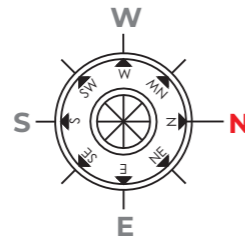


FIRST FLOOR PLAN



SECOND FLOOR PLAN

VILLA TYPE 1 VILLAS 6 & 7



AREA - 279.98 SQ. MTS.+ 35.75 SQ. MTS.(O.T.)

SOSSEGO
MAJORDA - GOA



GROUND FLOOR PLAN



FIRST FLOOR PLAN



SECOND FLOOR PLAN

VILLA TYPE 1



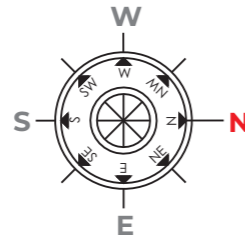
VILLA TYPE 2



SUSSEGO
MAJORDA - GOA

VILLA TYPE 2

VILLAS 4 & 5



AREA - 265.17 SQ. MTS.+ 36.75 SQ. MTS. (O.T.)

SOSSEGO
MAJORDA - GOA



GROUND FLOOR PLAN

FIRST FLOOR PLAN

SECOND FLOOR PLAN

VILLA TYPE 2



SOSSEGO
MAJORDA - GOA



SOSSEGO
MAJORDA - GOA

PROJECT SPECIFICATIONS

Structure

RCC Framed Structure with External Walls in Laterite/ Concrete blocks and internal walls using block/ bricks masonry.

Windows

All windows will be anodized aluminum frames. Toilet windows will be anodized aluminum frame with frosted/single reflective glass.

Flooring / Skirting

Vitrified tiles of Johnson/Kajaria or equivalent brands or Indian Stone.

Cooking Alcove

Modular Kitchen of IFB/ Wurfel/ WudStahl or Equivalent brands.

Doors

Main doors of teak wood panels and teak wood frame and internal doors with Hardwood/WPC frame with flush doors. All doors with Hardware of Godrej/ Europa/ Dorset or equivalent brands.

Electricals

Concealed copper wiring of Finolex / Polycab or equivalent brand with safety devices such as MCB and ELCB, switches of Legrand/Phillips or equivalent brand.

Wall Finish

Internal walls: Cement/Gypsum plaster and painted with acrylic branded paints of Asian/ Birla opus or equivalent brand
External Walls: Cement plaster with weatherproof coating and paints of Asian/ Birla opus or equivalent brand.

Bathrooms

Flooring of Vitrified tiles or equivalent with walls of ceramic/glazed/vitrified tiles of Johnson/Kajaria or equivalent
Bathrooms will be fully clad with GROHE/ American Standard/KOHLER fittings.
Jacuzzi and bath tub of Jaguar brand or equivalent brand
cold and hot supply with concealed PVC pipeline.

Exterior

Decking for pools.
Landscaped Gardens
Dedicated Parking area for 2 cars

Staircase

Natural Stone/ Vitrified tiles step as per design
Designer Handrail of MS powder coated with wooden hand rail.

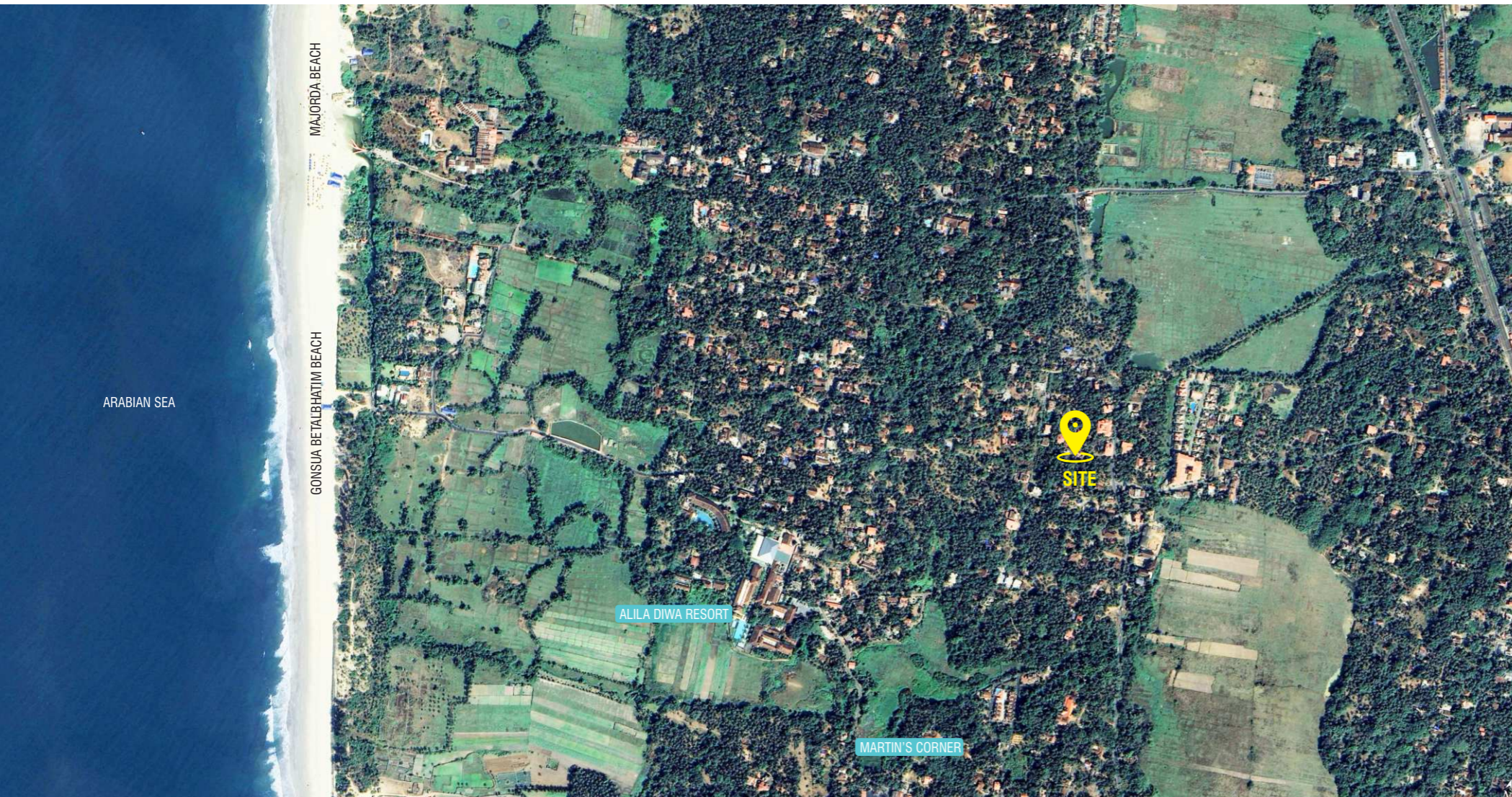
Balcony

Dedicated Patio Balcony
MS powder coated railing
Natural Stone/ Vitrified tiles flooring

Pool and Deck

Good quality branded tile decking
Led Underwater Lighting
Landscaped Garden with Seating and Lounge area

LOCATION MAP



SOSSEGO

MAJORDA - GOA

APPROXIMATE DISTANCES

- Gonsua Betalhatim Beach 1.6km (5 min walk)
- Majorda Beach 1.8km (6min walk)
- Martin's Corner 1.2km (4 mins walk)
- Alila Diwa Resort 800m
- Carpe Diem Art Gallery 1.2km
- Margao Bus Terminus 7.6 km
- Dabolim International Airport 18.6km



SCAN QR CODE FOR LOCATION

FIND YOUR DREAM HOME BY THE SEA



POROBO



FOR BOOKINGS & ENQUIRIES PLEASE CONTACT



Porobo Realty LLP

📍 Off. 208-210, 2nd floor, Lake Plaza, Opposite
Nehru Stadium, SH 5, Fatorda, Goa, 403602

☎ 9175201800

✉ poroborealty@gmail.com

🌐 www.poroborealty.com

CONSULTANTS

ARCHITECTS - SAWANT & ASSOCIATES | RCC CONSULTANT - Eng. AUXILIO J S RODRIGUES